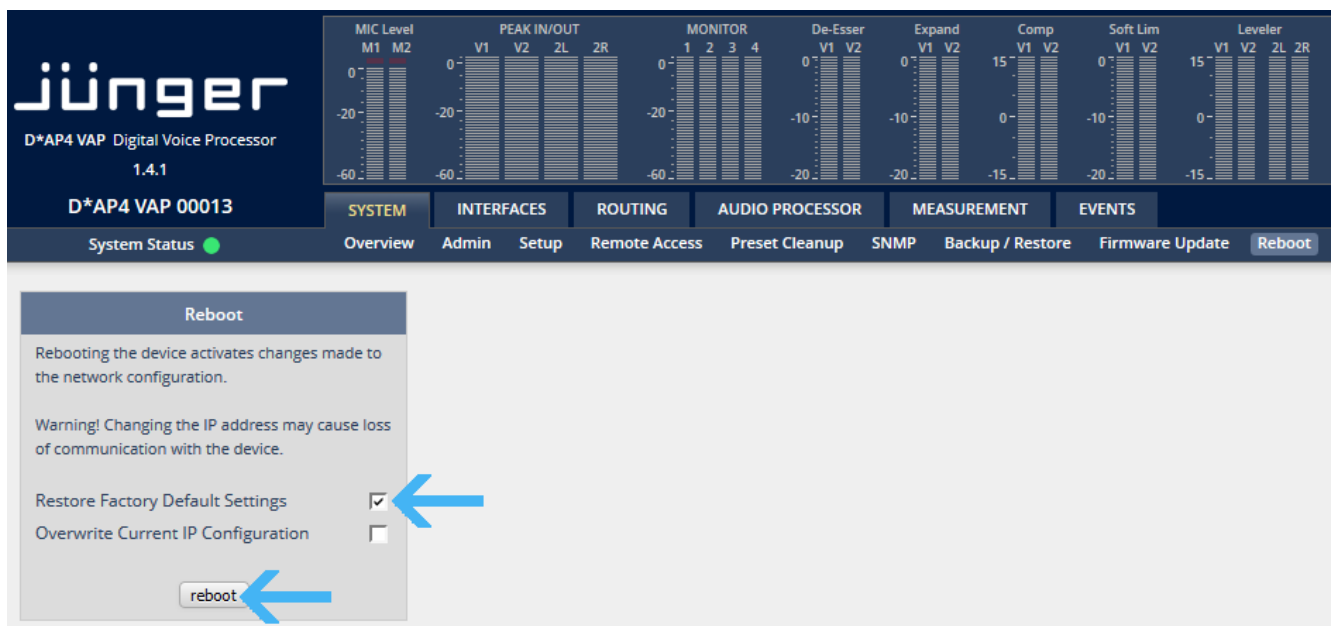


How to restore or import Factory Default Presets

The easiest way to restore all factory presets and settings is to use the 'Restore Factory Default Settings' function in the SYSTEM -> Reboot tab:



However, **this will delete all existing user settings and presets** and is not very convenient in many applications.

With the Factory Default Presets file provided in the firmware package, it is very simple to selectively import only certain presets while preserving all user preset data and settings. The following step by step instructions will guide you through the import process.

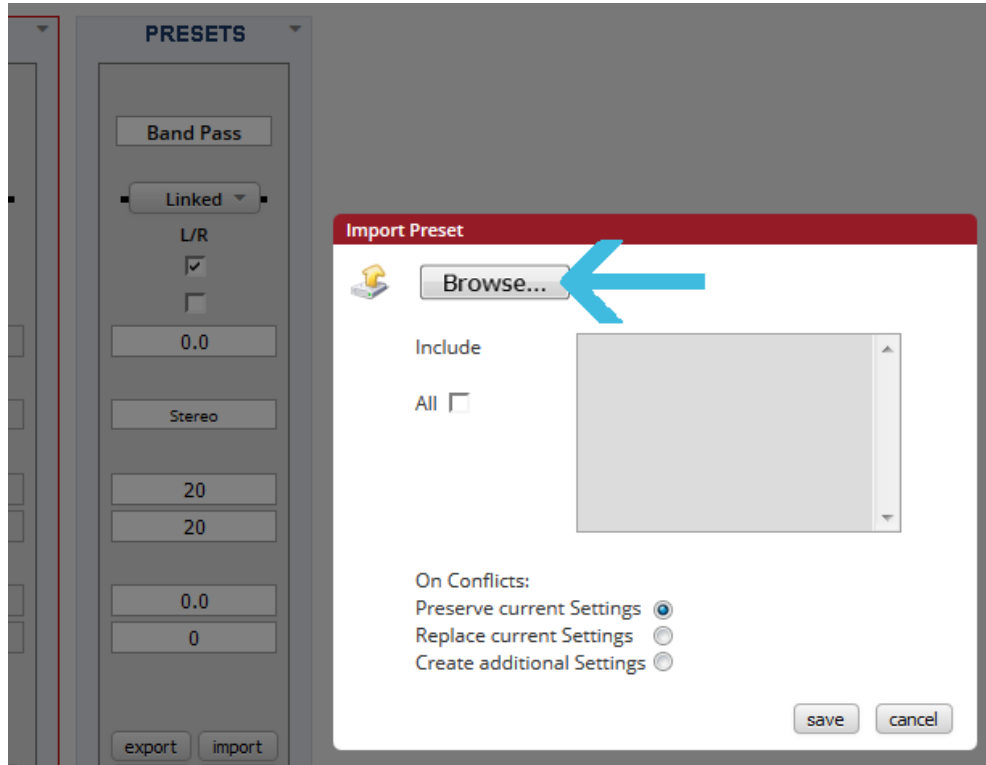
As an example the D*AP4 VAP EDITION Input section is shown, but the process is similar in the web UI of all other current slim line devices. Please note that importing multiple presets in one go may not yet be available with all firmware versions.

1. Go to the required section in the D*AP web UI (Input section shown) and click the 'Import' button in the PRESETS section

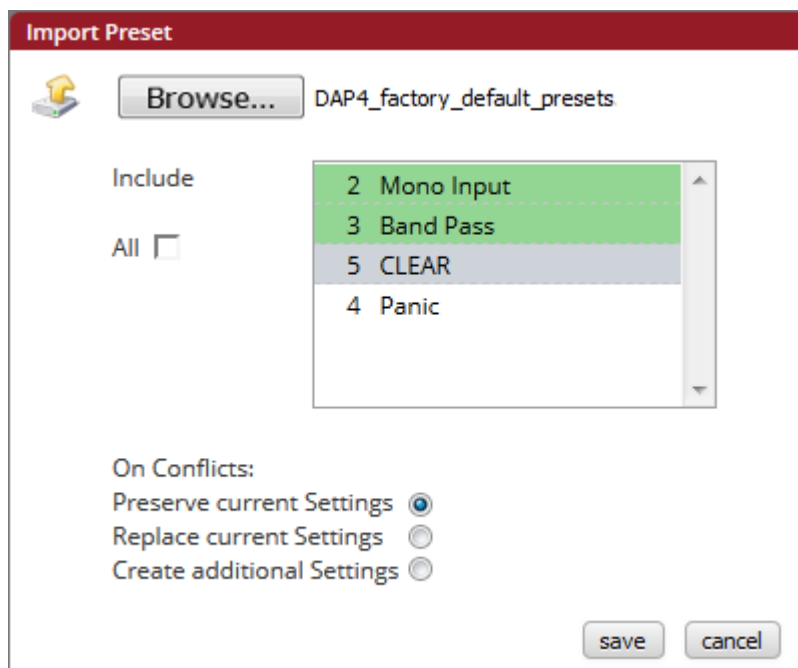
The screenshot displays the Jünger D*AP4 VAP Digital Voice Processor web interface. The top navigation bar includes tabs for SYSTEM, INTERFACES, ROUTING, AUDIO PROCESSOR (highlighted), and MEASUREMENTS. Below this, a sub-navigation bar shows options like Overview, Setup, Input (selected), M/S, Phase Rotator, De-Esser, Filter, and Dynamics. The main content area is divided into two panels: 'ON AIR' and 'PRESETS'. The 'ON AIR' panel shows the current program settings, including a 'Linked' dropdown, '2L/2R' checkboxes, 'Input Gain (dB)' set to 0.0, 'L/R Stereo' mode, and 'Input HPF (Hz)' and 'Input LPF (kHz)' both set to OFF. The 'PRESETS' panel shows a 'Mono Input' section with similar controls. At the bottom of the 'PRESETS' panel, there are four buttons: 'export', 'import' (highlighted with a blue arrow), 'copy', and 'paste'. The 'import' button is the target of the instruction in the list above.

2. A dialog box will open. Browse for the *_Factory_Default_Presets.xml file from the firmware package

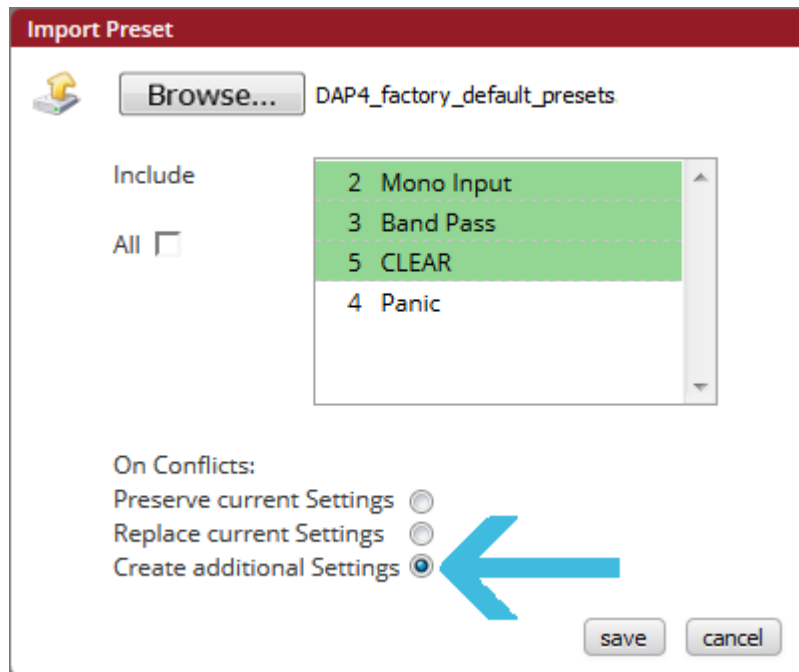
Please note: * is a place holder for whatever device type you are using (D*AP4, D*AP8...)



3. Select the Presets you would like to import. Holding CTRL allows for selecting multiple presets, holding SHIFT for selecting adjacent presets in a row. If all presets should be imported, there is an 'All' checkbox for convenience.



4. Select 'Create additional Settings' to preserve any existing presets of the same name



5. Click 'Save'

The *_Factory_Default_Preset.xml file contains all default Presets, Events and Actions.

Events and Actions can be imported with the same principle. When importing Events or Actions, all necessary Presets will be restored automatically.